



Anyagfizikája

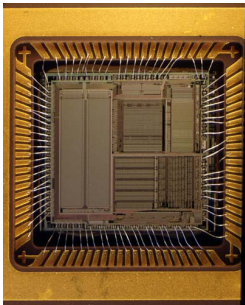
Vizsgálati módszerek

Groma István

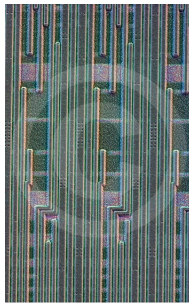
ELTE

March 29, 2021



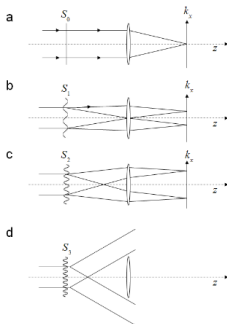


Processor



Rács elhajlás

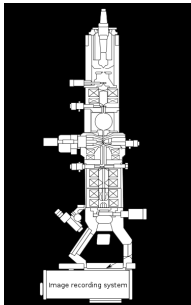
$$\sin \alpha = \frac{\lambda}{d}$$



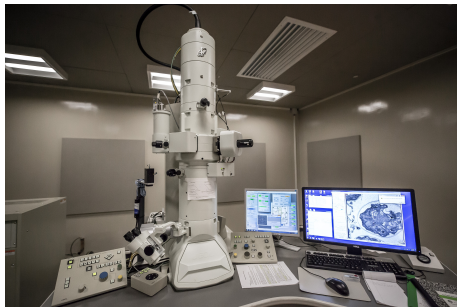
fény esetén $d \approx 1\mu\text{m}$

Elektron

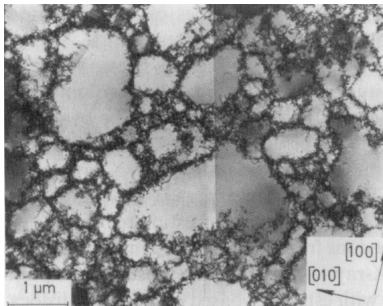
$$E = \frac{h^2}{2m\lambda^2}, \quad \lambda = \sqrt{\frac{h^2}{2mE}}$$



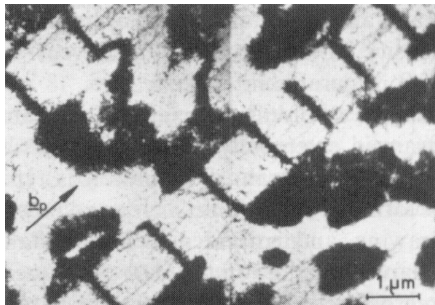
Sematikus rajz



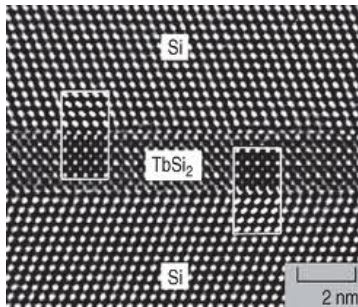
300 kV TEM



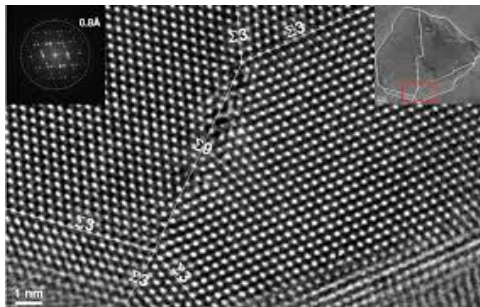
Cella szerkezet



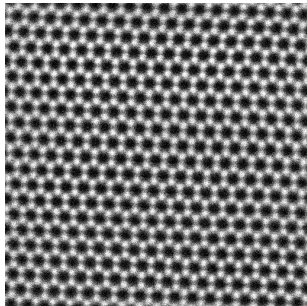
PSB szerkezet



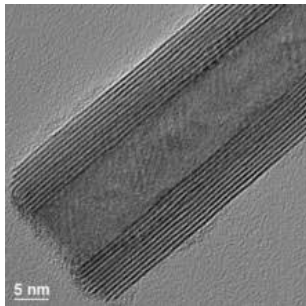
Multiréteg



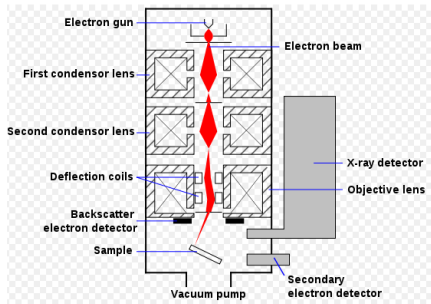
Szemcsehatár



graphene



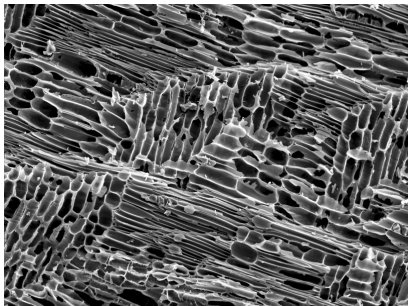
nanocső



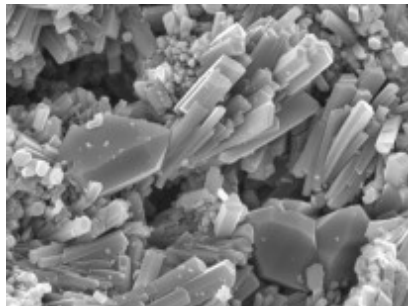
SEM



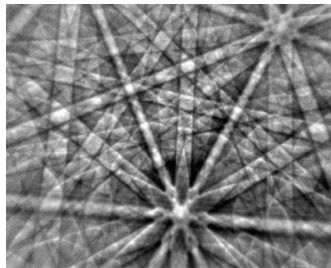
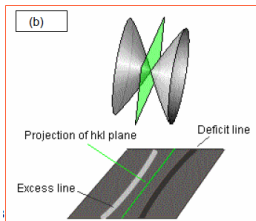
Laboratórium



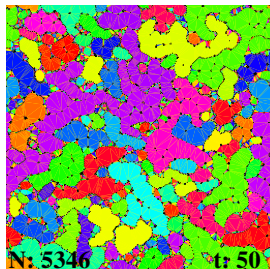
gumi



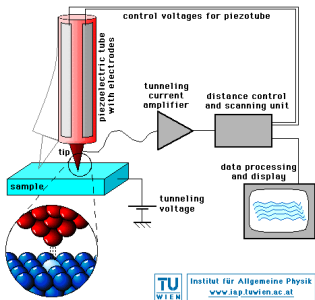
kvartz



EBSD kép



szemcsék



AFM

